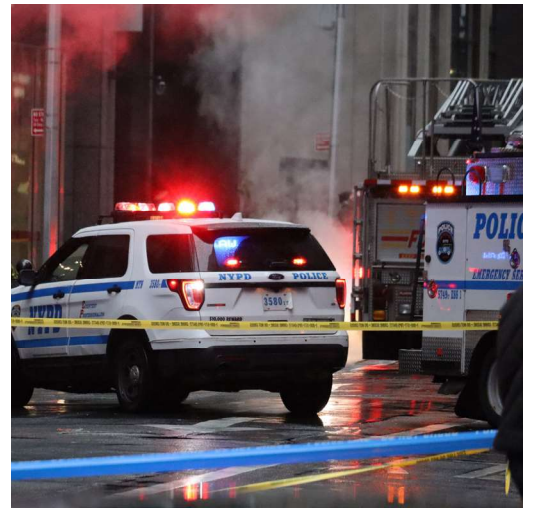
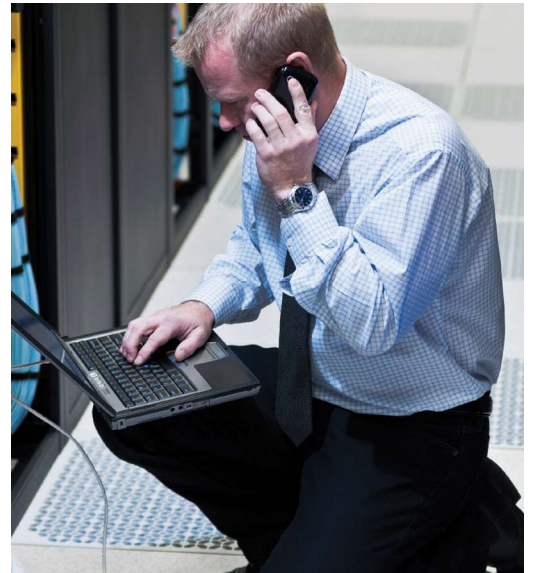


# CRITICAL INFRASTRUCTURE RESILIENCE & COMMUNITY LIFELINES

MGT-414

DHS/FEMA-funded course



# CRITICAL INFRASTRUCTURE RESILIENCE & COMMUNITY LIFELINES

## MGT-414

In this course, participants will learn how to develop a roadmap for progress toward the National Preparedness Goal by facilitating the development of resilience considerations and involving essential community critical infrastructure partners. Participants will learn how to formulate considerations for the resilience of community assets that leverage cross-sector partnerships. These considerations enhance the whole community's ability to manage the risk associated with critical infrastructure protection efforts. During this course, participants will have an opportunity to practice the practical skills necessary to formulate considerations in the local community.

Individuals completing this course in combination with MGT310, MGT315, and AWR213, are awarded the TEEX Infrastructure Protection Certificate.

### Course Topics

- Understanding your community
- Understanding community lifelines
- Concepts of resilience
- Assessing and analyzing risk
- Senior leaders brief

### Certificate Requirements

**AWR-213** CI Key Resources Awareness

**MGT-310** Threat & Hazard. Identification

**MGT-315** Critical Asset Risk Management

### FEMA / SID Number

Students must register and bring a copy of their SID number to class. Register online:

[cdp.dhs.gov/femasid](http://cdp.dhs.gov/femasid)



For more information, contact:

**TEXAS A&M ENGINEERING EXTENSION SERVICE**

200 Technology Way

College Station, Texas 77845-3424

979.845.6677

[ILEPSE@teex.tamu.edu](mailto:ILEPSE@teex.tamu.edu)

[TEEX.org/nerrtc](http://TEEX.org/nerrtc)

### Course Length

One Day (8 hours)

### Venue

Jurisdiction

### Class Size

20 - 40 Participants

### CE Credits

IACET – 0.80 CEUs

TCOLE #78400

### Participants

- Law enforcement, public works, fire service, and hazmat
- Emergency medical and emergency management,
- Health care/public health providers, and non governmental agencies.
- State national guard
- CI owners, operators, and managers
- State, local, tribal, and territorial government senior officials and managers
- DHS personnel
- Sector-Specific Agency managers
- Other managers with CI responsibilities

